

\$788,000 - 10608 140 St, Edmonton

MLS® #E4406383

\$788,000

5 Bedroom, 2.00 Bathroom, 1,442 sqft
Single Family on 0.00 Acres

Glenora, Edmonton, AB

Glenora, Teddy Bear Park, Corner Lot
.....

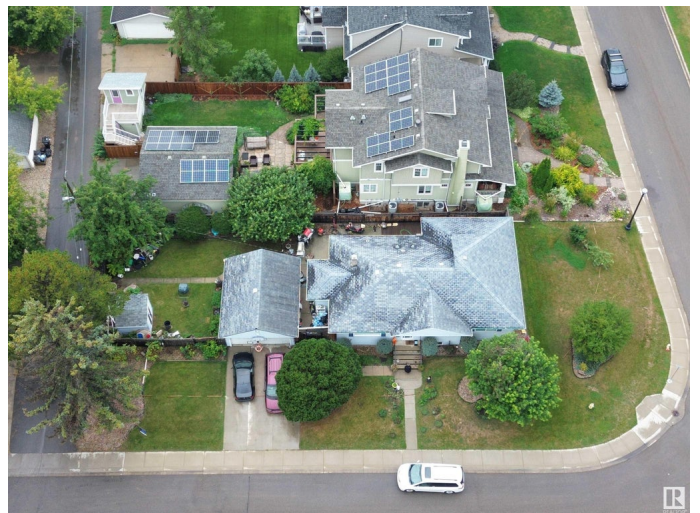
Built in 1953

Essential Information

MLS® #	E4406383
Price	\$788,000
Bedrooms	5
Bathrooms	2.00
Full Baths	2
Square Footage	1,442
Acres	0.00
Year Built	1953
Type	Single Family
Sub-Type	Detached Single Family
Style	Bungalow
Status	Active

Community Information

Address	10608 140 St
Area	Edmonton
Subdivision	Glenora
City	Edmonton
County	ALBERTA
Province	AB
Postal Code	T5N 2M3



Amenities

Amenities	Crawl Space
Parking	Double Garage Detached, Front Drive Access

Interior

Appliances	Dishwasher-Built-In, Garburator, Stove-Gas
Heating	Forced Air-1, Natural Gas
Stories	1
Has Basement	Yes
Basement	Partial, Partially Finished

Exterior

Exterior	Wood, Vinyl
Exterior Features	Back Lane, Corner Lot, Fenced, Playground Nearby, Schools
Roof	Asphalt Shingles
Construction	Wood, Vinyl
Foundation	Concrete Perimeter

Additional Information

Date Listed	September 13th, 2024
Days on Market	182
Zoning	Zone 11

DATA IS DEEMED RELIABLE BUT IS NOT GUARANTEED ACCURATE BY THE REALTORS® ASSOCIATION OF EDMONTON. COPYRIGHT 2025 BY THE REALTORS® ASSOCIATION OF EDMONTON. ALL RIGHTS RESERVED. Trademarks are owned or controlled by the Canadian Real Estate Association (CREA) and identify real estate professionals who are members of CREA (REALTOR®, REALTORS®) and/or the quality of services they provide (MLS®, Multiple Listing Service®)

Listing information last updated on March 14th, 2025 at 5:02pm MDT