

# \$429,800 - 14013 101 Avenue, Edmonton

MLS® #E4414594

**\$429,800**

0 Bedroom, 0.00 Bathroom,  
Single Family on 0.00 Acres

Glenora, Edmonton, AB

**OPPORTUNITY KNOCKS!** Build your dream home on this fantastic SOUTH facing lot in Capitol Hill. 30 ft wide and 140 ft deep (plus 20 ft easement in the front allowed by the City=160 ft deep). A stone's throw away from the beautiful ravine and lush river valley. Close to all the amenities & downtown. Site is already cleared.

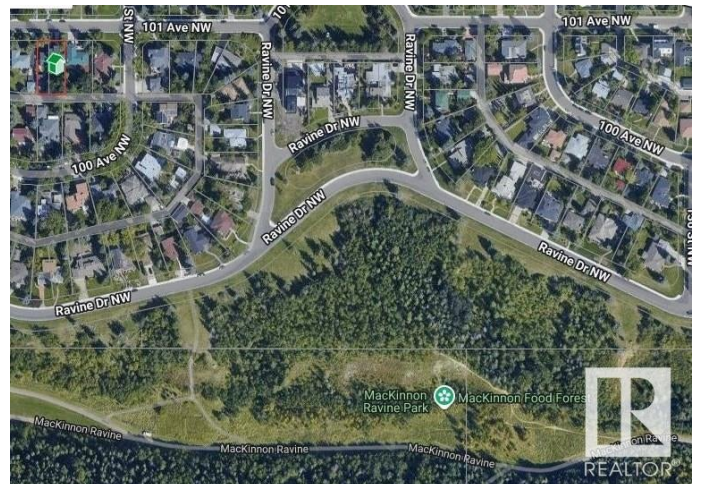
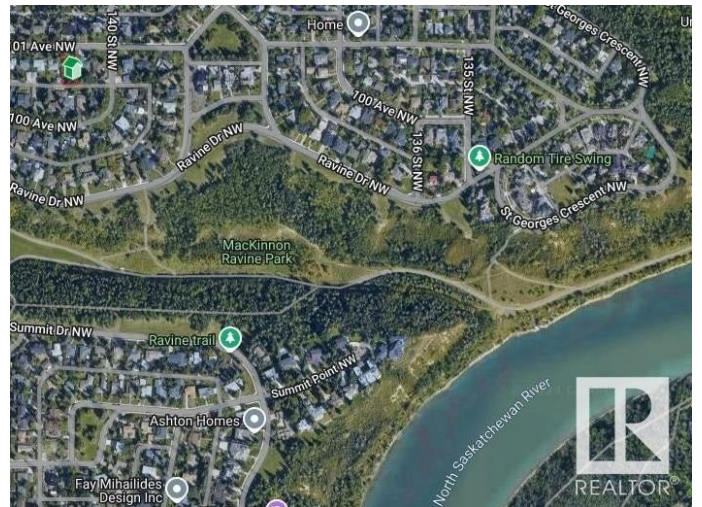
## Essential Information

MLS® #	E4414594
Price	\$429,800
Bathrooms	0.00
Acres	0.00
Type	Single Family
Sub-Type	Vacant Lot/Land
Status	Active

## Community Information

Address	14013 101 Avenue
Area	Edmonton
Subdivision	Glenora
City	Edmonton
County	ALBERTA
Province	AB
Postal Code	T5N 0K2

## Exterior



Exterior Features Public Transportation, Schools, Shopping Nearby, See Remarks

### **Additional Information**

Date Listed November 22nd, 2024

Days on Market 112

Zoning Zone 11

DATA IS DEEMED RELIABLE BUT IS NOT GUARANTEED ACCURATE BY THE REALTORS® ASSOCIATION OF EDMONTON. COPYRIGHT 2025 BY THE REALTORS® ASSOCIATION OF EDMONTON. ALL RIGHTS RESERVED. Trademarks are owned or controlled by the Canadian Real Estate Association (CREA) and identify real estate professionals who are members of CREA (REALTOR®, REALTORS®) and/or the quality of services they provide (MLS®, Multiple Listing Service®)

Listing information last updated on March 14th, 2025 at 6:47pm MDT